

Flood Risk Assessed for Southwest

BY SARAH LAZO, U.S. ARMY CORPS OF ENGINEERS, BALTIMORE DISTRICT

The District of Columbia Levee System, also referred to as the Potomac Park Levee System, was constructed near the National Mall by the U.S. Army Corps of Engineers (USACE) in the 1930s to reduce Potomac River flooding to Southwest D.C., the Federal Triangle and other areas west of the Capitol. Operated and maintained by the National Park Service (NPS), this levee system has been protecting Southwest from severe flooding for nearly a century.

On Oct. 30, USACE and NPS hosted a public meeting at Westminster Presbyterian Church to share information with attendees on the results of a safety risk assessment completed for the District of Columbia Levee System. DC Homeland Security and Emergency Management Agency (HSEMA) also presented on flood preparedness measures for property and business owners/renters and evacuation procedures.

"The purpose of this meeting was to improve the public's understanding of flood risk in the area as well as to educate residents and businesses on steps they can take to prepare for and reduce damages from flooding," said Jehu Johnson, USACE, Baltimore District, Levee Safety Program manager. "Managing flood risk is a shared responsibility—from the federal level to the public. Residents in Southwest D.C. benefit from this levee being here, but they would also be the ones impacted if a severe storm were to bring water over the top of the levee and cause it to break due to pressure or erosion, as the area naturally sits on lower ground."

This meeting was held as part of a nationwide effort USACE is leading to individually assess levees across the nation to determine their safety

See "Flood Risk" page 15



Photo: SWBID & Michael Vergason Landscape Architects, Ltd.

The improved 10th St., SW—south promenade, looking north

Improved: The Journey to Beautify and Strengthen 10th St., SW

BY KATELYND MAHONEY ANDERSON

A quiet street rests amid the weaving maze of the on-ramps and off-ramps of 395. Linking the Washington Channel to the National Mall, 10th St., SW has long been a forgotten connec-

tor to the neighborhood. But all of that is about to change.

A partnership between the SWBID, JBG Smith and the International Spy Museum is seeking to reimagine not just

See "10th Street" page 3

Amidon-Bowen Shines Again DC's Teacher of the Year is Right Here in Southwest

BY ROSE SHELTON

Once again, Amidon-Bowen Elementary School is in the spotlight for another great achievement. On Monday, Nov. 5, Mayor Muriel Bowser presented the 2019 DC Teacher of the Year Award to Amidon-Bowen's own 3rd grade teacher, Ms. Kelly Harper. Ms. Harper has been a teacher at Amidon-Bowen for six years, teaching her students with passion, integrity and intention. She is known for always going the extra mile and building up the whole child. She never forgets why she is doing the hard work of educating and the impact education has on the life of every child she encounters. As Mayor Bowser stated on the day she



Photo: Rose Shelton

Amidon-Bowen students Simone Shelton and Zoe Shelton with Teacher of the Year, Ms. Kelly Harper

presented the award to Ms. Harper at Amidon-Bowen, "Everyday, Ms. Harper is changing lives in Washington, DC."

Since this recognition, the entire city

See "Teacher," page 6

CAPITAL FRINGE

RETURNING TO SOUTHWEST

Page 2



NATIONAL GALLERY OF ART PUTS THE SOUTHWEST EXPERIENCE ON DISPLAY

Page 4



KID'S CORNER

Page 8



ST. MATTHEW'S WELCOMES NEW REVEREND

Page 12

Hello, Neighbor!

BY PHILIPPA HUGHES

The Southwest Business Improvement District (SWBID) is featuring long-time and newer residents of Southwest in a video series called, "Hello, Neighbor!" Each week, a new video portrait of a Southwest local will be posted on the SWBID.org website. Neighbors share their personal stories and memories of the neighborhood.

"People here in SW have a strong sense of belonging," says SWBID Executive Director Steve Moore. "It has come through in these videos in a way we never expected. It is special here. There is no doubt about it."

One of the common themes in conversations with each person featured in the videos is a great love for the community spirit in the neighborhood and great pride in all the things the community offers its residents, from free music at Westminster to cultural programming at Arena Stage and Blind Whino. Everyone loves the green, leafy spaces, too. Residents espe-



Photo: Royelen Boykie

Jason Kopp was interviewed on his boat at the Gangplank Marina for the "Hello, Neighbor!" project.

cially appreciate how much Southwest feels like a small, friendly village within a big city. Southwest offers it all.

Many Southwesterners are deeply involved in the community through civic work. They organize community Hallow-

een parties, clean the parks, and mentor young people. Neighbor Corinne Irwin helped start Friends of Titanic Memorial. Neighbor Donna Purchase was a co-founder of the Southwest Neighborhood Assembly. Neighbor Coy McKinney started a community garden in Lansburgh Park called SW Gardens. Neighbor Thelma Jones is involved in breast cancer awareness and is an official batgirl for the Washington Nationals for Breast Cancer Awareness. Some residents are entrepreneurs like neighbor Melissa Rohan who saw a need for early childhood education in the community and started a Montessori school. Residents of Southwest's floating neighborhood also appear in the videos! Neighbor Jason Kopp, who has lived on a boat for 12 years moored at Dock C, says longtime residents will always call their

home on the river the Gangplank Marina.

Meet your neighbors in these videos and then meet them in person at a viewing party hosted by the SWBID on Feb. 12 at Westminster Church. Save the date and say hello to your neighbors!



Help Save Lives in the District by supporting The Thelma D. Jones Breast Cancer Fund

The Thelma D. Jones Breast Cancer Fund is an award-winning grassroots organization with local, national and global recognition. Our mission is to advocate and improve the overall health and wellness for women and men through outreach, education, and prevention. We promote early detection strategies for breast health and access to the best biomedical and evidence-based complementary therapies to reduce the incidences and mortality rates of breast cancer. Our vision is to save lives, embrace and achieve a world community free of breast cancer.

When donating to the fund by mail, please make check or money order payable to the Thelma D. Jones Breast Cancer Fund.

Thelma D. Jones Breast Cancer Fund
400 "I" Street, SW
Washington, DC 20024
(202) 251-1639
www.tdjbreastcancerfund.org
thelma@tdjbreastcancerfund.org

The Southwest Renaissance Development Corporation is a 501 (c)(3) nonprofit corporation serving as the fiduciary agent of The Thelma D. Jones Breast Cancer Fund.

The Southwester

Circulation 13,000

Send submissions and questions to *The Southwester* by email at editor@thesouthwester.com. Submissions for each monthly issue are due on the 15th of the preceding month.

For advertising information and rates, see www.thesouthwester.com/advertising.pdf or contact ads@thesouthwester.com

Remittance address for ad payments only is:

The Southwester

P.O. Box 70131 • Washington, DC 20024

Southwester Staff

Editor Emeritus: Dale MacIver

Editor-in-Chief: Katelynd Mahoney Anderson

Editorial Staff: Mike Goodman (Copy & Web);

Maya Renee (Calendar)

Advertising: Donna Purchase

Distribution: Perry Klein

Design & Layout: Electronic Ink

Printer: Chesapeake Printing



The Southwester is published and distributed by the Southwest Neighborhood Assembly

Donate to us: www.mightycause.com/organization/Southwest-Neighborhood-Assembly

Copyright © 2018 Southwest Neighborhood Assembly, Inc. All rights reserved.

To contact the Southwest Neighborhood Assembly or *The Southwester*, call (202) 437-1700.

Capital Fringe Returning to Southwest

BY JOANNA LEVINE

After their successful stint here in 2018, the Capital Fringe Festival will return to Southwest in 2019. As Festival Producer Lee Cromwell put it, "Southwest shows the magic between community, businesses and tourism." Whether it's our farmers market, our night market or the lively events at the Wharf, Capital Fringe experienced the charm of our neighborhood first hand, and they want more!

With the festival coming back to Southwest for the second year in a row, Capital Fringe is hoping to engrain a sense of "fringe culture" in our community. They have a desire for us to take more ownership and to feel as though we are more than just "renters" of the festival. There are plenty of opportunities for residents to get involved, to become more knowledgeable and feel as though they are a part of the festival. If there are artists who would like to participate, those applications are due by Jan. 11, so there is still time for Southwesterners to share a creative piece and apply. If you're like me and your artistic side is lacking, but you'd be thrilled to get involved in another way, there is the opportunity to host. If you have a spare bedroom and can host an out-

CAPITAL FRINGE

of-town artist, you will be compensated with multi-ticket passes—making it significantly cheaper to see multiple shows and take a risk on the type of show you go for.

The Fringe Festival has something for everyone—you just have to find it. This model of theater, which started in Edinburgh in the 1940s, is based on the importance of supporting local artists. With fringe festivals all over the world, Capital Fringe is one of the five largest in the United States, with DC's being known for running longer than most, according to Cromwell. Artists can pay a small fee to participate without needing to pass a litmus test for the stories they want to tell. Last year, between 55 and 70 percent of the Capital Fringe ticket sales went back to the artists.

What makes our neighborhood so unique in terms of hosting the festival is how concentrated everything is. Last year, this accessibility meant that every show was within a seven-minute walk of each other. According to Cromwell, capacity for 2018 individual shows went up 10 percent from 2017 with a goal for it to increase further in the future.

To find more information, including applications, please visit www.capital-fringe.org.

Locally Owned UPS Store Coming to The Wharf

BY KEN BAUTISTA

In 2007, some college friends and I pulled Washington, DC out of a hat in search of our next adventure.

We moved here in 2008 with almost nothing to our names, and out of sheer luck we found ourselves renting a townhouse in the Southwest Waterfront neighborhood. I worked several retail jobs before landing a career in nonprofit policy work. Over the next ten years, I bought a townhouse here, got a dog and have made some wonderful, lifelong friends. Now I'm becoming a small business owner, right here in my Southwest neighborhood.

I'm so excited to announce that in the spring of 2019, I will be opening a UPS Store at The Wharf. Our



See "UPS," page 15

10TH STREET

Continued from p. 1

the look and feel of the half-mile corridor, but its purpose as well. The new Spy Museum is set to open along this stretch in the spring of 2019, bringing many new visitors to the neighborhood. “The street walkways are wide and can be pedestrian friendly. By activating the boulevard and providing shade and canopy options, this currently barren street can blossom into its true potential: a beautiful, welcoming space that connects the National Mall to the Wharf, and is worthy of our Nation’s Capital,” says Aliza Bran, Public Relations and Marketing Coordinator for the Spy Museum.

The concept in the National Capital Planning Commission (NCPD) presentation lays out four major components: provide cooling shade, enrich experience, expand seating opportunities and create spatial moments. Landscape including canopy trees, native grasses and perennials are at the heart of this redesign. A major component of this plan is that none of the improvements are permanent. Each one is temporary and can easily be reversed. According to the presentation, also key for these improvements will be that they “build on the strongly metered pattern of I.M. Pei’s original design with the addition of trees, ground cover, and seasonal plantings over the existing concrete panels” for the northern half of the promenade, while to the south the plantings will “build on the recent perennial plantings on the slope of Benjamin Banneker Park.”

Benjamin Banneker Park, which in its current form serves as more of a traffic circle than a park, is named for the African-American astrologer and almanac author,



Photo: SWBID & Michael Vergason Landscape Architects, Ltd.

The improved 10th St., SW—north promenade, looking south

who in 1791 assisted in the original survey for the District of Columbia. The 4.7-acre urban park is administered by the National Park Service (NPS) and was originally conceived in 1967 as “The Tenth Street Overlook.” The DC Council petitioned NPS to rename the park in honor of Banneker in 1970, only a year after construction was complete. During the 2000s, the site was the subject of many conversations of redevelopment including redevelopments such as a potential baseball stadium, the National Museum of African-American History and Culture, and the National Children’s Museum. All of the conversation around redevelopment led the DC Historical Preservation League to list the park as one of the most endangered places in the city. Most recently, the park has been included as a part of the SW Ecodistrict, (accepted by the NCPD in 2014), as well as receiving improvements through a staircase and

enhanced lighting, further connecting the park to the Wharf, this past Spring.

The Banneker staircase was one of the first major components of renovating 10th St. The second component will involve the installation of planters, trees and furniture along L’Enfant Plaza, and the final component is the restoration of the fountain in Banneker Park, which when operating correctly is capable of shooting water over 30 feet in the air. The SWBID is prioritizing fixing the fountain, which could cost as much as \$800,000. If successful, repairing the fountain would further drive visitors to walk the full stretch of 10th St., strengthening its foundation as a gathering place for

the neighborhood.

Many are credited with helping revitalize this part of the neighborhood, including the commitments of time and resources from individuals at PN Hoffman, JBG, the Spy Museum, and the SWBID. Through a reimagined use of space, these partners hope to create a new destination for locals and visitors alike. By discovering the hidden gem that is 10th St. and Banneker Park, the public will change their perspective of the area. It will no longer serve as just a connector, but rather will serve as a terminus in itself—a quiet oasis amidst of the hustle and bustle of the new SW.

Recap of Election 2018

BY SOUTHWESTER STAFF

DC voters went to the polls on Nov. 6, and overwhelmingly kept incumbents in office. Mayor Muriel Bowser (D) won reelection for her second term, the first mayor to do so since 2002. Attorney General Karl Racine (D), the city’s first publicly elected Attorney General, also won a second term. DC Council Chairman Phil Mendelson (D) and at-large DC Council incumbents Anita Bonds (D) and Elissa Silverman (I) all held on to their seats, as did Ward 6 Council-

member Charles Allen (D). Newcomer Jessica Sutter was elected to the Ward 6 seat on the State Board of Education. ANC 6D has three newly elected commissioners: Anna Forgie (6D02), Anthony Dale (6D05) and Edward Daniels (6D07). They will join re-elected incumbents Gail Fast (6D01), Ron Collins (6D03), Andy Litsky (6D04) and Rhonda Hamilton (6D06). A full breakdown of the election results can be found on the DC Board of Elections website at www.dcboc.org.



Transportation Task Force Looking for Volunteers

The Southwest Neighborhood Assembly’s (SWNA) Transportation Task Force is seeking volunteer members to help work on issues critical to the quality of life in Southwest. As all residents recognize, the development in and around our community has led to new challenges related to all aspects of mobility—pedestrians, automobiles, bikes, scooters, Metro, buses, parking, etc. In order to have a voice in addressing these, we must be organized and active in monitoring impactful activities, communicating with our government officials and representatives, and identifying solutions, and all of this requires contributions from as many individuals as we can attract. The level of your involvement is whatever amount of time you can contribute—there is no specific time commitment. If you are interested in participating in the work of this Task Force, or simply learning more about the issue, please email SWNA President and Task Force chair Bruce Levine at balevine82@gmail.com.

National Gallery of Art puts the Southwest Experience on Display

BY SHEILA WICKOUSKI

Gordon Parks: *The New Tide, Early Work 1940-1950* at the National Gallery of Art has something for everyone, but this exhibit will especially resonate with Southwesterners. In the fall of 1942, when Parks worked for the Office of War Information, he and his family lived at 63 O St., SW in housing built for defense employees.

Parks described his time here as “getting along fine and getting a wonderful experience.” In the collection of black and white photographs in *The Home Front*, he documented the grimness of the area with its sub-standard housing slated for removal.

The other four galleries in the exhibit cover a range of the early works of this remarkable self-taught artist.

Parks had decided that the camera would be his choice of weapon and so his first works are appropriately grouped as *A Choice of Weapons* (1940-1942). This collection features his elegant society portraits as well as events such as the South Side Community Art Center dedication in Chicago in May 1941 with First Lady Eleanor Roosevelt in attendance. Renowned poet and playwright Langston Hughes, philosophy professor and architect of the New Negro movement Alain Locke, and opera singer Todd Duncan are included



Washington, D.C., Mrs. Ella Watson, a government charwoman, with three grandchildren and her adopted daughter, July 1942

Photo: Gordon Parks



Photo: Gordon Parks

Washington, D.C., young boy standing in the doorway of his home on Seaton Road in the northwest section. His leg was cut off by a streetcar while he was playing in the street., June 1942

in this section.

Government Work (1942) features photographs created during his short time with the Farm Security Administration, when he was tasked with photographing the Frederick Douglass Dwellings—public housing constructed in DC’s Anacostia neighborhood for black defense work-

ers. Very different than the Southwest photographs, these suggest a more pleasant life: a mother looking through her kitchen window at her children in the yard as she prepares the evening meal and another of a family saying grace at the dinner table. His photos of young children especially capture their playful, spirited energy.

In his continuing efforts to document racism in DC at this time, Parks photographed Ella Watson. His iconic portrait, *Washington, D.C. Government Charwoman* (*American Gothic*), has her posed with her mop and broom in front of an American flag. Parks also chronicled her life with her family in their home and at church. Thus with his photographic skills he created these narratives that are now

social documents.

Standard Oil (1944-1948) includes a set of rarely seen works Parks produced for Stryker at Standard Oil Company (New Jersey), for the company’s public relations campaign during wartime shortage. To photograph the “face of oil,” he traveled through the Northeast US and into Canada, capturing the grittiness of coal workers, refinery operators, pipe fitters, railroad workers, grease makers, drilling crews and miners, in the cities, towns, schools, shops and farms that depended on the petroleum industry.

Parks truly photographed humanity in its diversity. There are celebrity portraits of historic notables like singer Marian

See “Gordon Parks,” page 9

Botanic Garden Features Tunes & Trains for the Holidays

BY SHEILA WICKOUSKI

The U.S. Botanic Garden’s free annual holiday exhibit, “Season’s Greenings: All Aboard!,” opened Thanksgiving Day, Nov. 22, and runs through New Year’s Day, Jan. 1.

This year’s exhibit features plant-based re-creations of iconic train stations from across the U.S., including classic stations like DC’s Union Station, New York City’s Grand Central Terminal, Detroit’s Michigan Central Station, Maui’s Lahaina Station, and many more, plus fantasy Dinosaur and North Pole stations. This year’s schedule of Holiday Music in the Garden free concerts, all beginning at 6 p.m., includes:

- 12/4: Project Natale (contemporary jazz)
- 12/6: 40 Thieves (Irish rock)
- 12/11: Samovar (Russian folk)
- 12/13: Dial 251 for Jazz (contemporary jazz)
- 12/18: Tony Craddock, Jr. & Cold Front (smooth jazz)
- 12/20: The Capital Hearings (a cappella)
- 12/27: Capital Accord Chorus (choral)

Location is 100 Maryland Ave. SW, on the southwest side of the U.S. Capitol. More information at www.USBG.gov/SeasonsGreenings.



ST. DOMINIC CATHOLIC CHURCH

Serving Southwest Washington since 1852

WEEKEND MASSES

Saturday: 5:00 p.m. Vigil

Sunday: 8:00 a.m., 10:30 a.m., 5:00 p.m.

WEEKDAY MASSES

Monday—Friday: 8:00 a.m., 12:10 p.m.
(8:00 a.m. only on a Federal Holiday)

Saturday: 9:00 a.m.

SACRAMENT OF RECONCILIATION

Mon-Fri: 11:55 a.m. — 12:30 p.m.

Thursday: 5:00 p.m. — 5:30 p.m.

Saturday: 4:30 p.m. — 5:00 p.m.

Sunday: 11:30 a.m. — 12:00 p.m.

EUCCHARISTIC HOLY HOUR

Thursdays: 4:45 p.m.

ST. DOMINIC CENACLE

A Discipleship Group for Adults

Tuesdays: 7 p.m. — Adoration;
7:40 p.m. — Talk/Discussion

YOUNG ADULT GROUP

Thursdays: 7 p.m. — Adoration;
7:40 p.m. — Talk/Discussion

UPCOMING EVENTS

THE SOLEMNITY OF THE IMMACULATE CONCEPTION

(A Holy Day of Obligation)

Friday, December 7: Vigil Mass, 5 p.m.

Saturday, December 8: 9 a.m. and 2 p.m.

RELIGIOUS MOVIE SEMINAR

Sundays, 6:30 p.m. in the Parish Meeting Room
(Mid-block E St. and down the stairs)

December 2 ~ The Sign of the Cross (1932)

December 9 ~ Francis of Assisi (1961)

December 16 ~ Joyeux Noël (2005)

THE LIGHT IS ON!

Advent Confessions

Mon-Fri: 11:55 a.m. — 12:30 p.m.

Thursday: 5:00 p.m. — 5:30 p.m.

Saturday: 4:30 p.m. — 5:00 p.m.

Sunday: 11:30 a.m. — 12:00 p.m.

ADVENT STATIONS: “FIGURES FULFILLED”

Saturday, December 15: 7:00 p.m.

Confessions: 6:30 p.m.

Reception to follow

CHRISTMAS MASS SCHEDULE

Monday, December 24: *The Vigil Mass*, 5 p.m.;

Mass during the Night, “Midnight Mass”, 9 p.m.

Tuesday, December 25: *Mass during the Day*, 10:30 a.m.

THE SOLEMNITY OF MARY, MOTHER OF GOD

(A Holy Day of Obligation)

Monday, December 31: Vigil Mass, 5 p.m.

Tuesday, January 1: 10:30 a.m.

A Vibrant Community of Disciples of the Risen Lord Jesus.

630 E Street, SW • (202) 554-7863 • office@stdominicchurch.org
www.stdominicchurch.org • 1 block from L’Enfant Plaza Metro



where DC meets its

merry



THE DISTRICT'S

HOLIDAY BOAT PARADE

SATURDAY, DECEMBER 1, 6:00–9:00PM

Join us for a sparkling holiday tradition, with beautifully decorated boats, cookie decorating, and our lighted Christmas Tree. Warm up by our fire pit, meet Santa, go ice skating, sample winter drinks at our Waterfront Beer & Wine Garden—and enjoy dazzling fireworks.

Must be 21 or over to consume alcohol.



For more information, follow us on social media or visit wharfdc.com.



DISTRICT
WHARF

Meet Gregory Williams: SWBID Wharf Team Supervisor

BY DONNA PURCHASE

Southwest DC is “the place to be.” We continue to spotlight the dedicated staff of the SWBID who are focused on making Southwest a clean, safe, vibrant community to live, work and visit.

Gregory Williams is part of the original SWBID crew. He supervises The Wharf team that works to keep the area looking good. Although most businesses contract for trash pickup, they appreciate the SWBID’s attention to keeping the storefronts and streets clean. He loves the diversity of the neighborhood and regularly interacts with area residents and tourists.

Greg previously worked with the Capital Hill BID and has been on the job here with SWBID for three years. He likes everything about the SWBID, especially the leadership and how they encourage teamwork. He says this is the best job he’s ever had. His co-workers really like working with Greg—they say he’s an excellent supervisor.

Greg was born and raised in DC. He attended Eckington Elementary, MacFarland Middle and Dunbar Sr. High. He loves DC—“the best city in the world.” He’s a proud family man with a daughter and grandson. He’s the oldest of five siblings and his immediate family still lives in DC.

SWBID COO Andre Witt says: “Greg is SWBID’s most experienced professional and has shown true dedication to his profession and to the BID from day one. He constantly assists staff with training techniques that improve how we operate as a



Gregory Williams

Photo: SWBID

BID. He is one of our top performers and we are so fortunate to have him.”

Greg’s Favorites

Movie: “Cooley High” and “Malcolm X”

Music: Old school, R&B and contemporary jazz

Favorite song: “La La La La La Means I Love You” by the Delfonics and “Pretty Pretty” by the Joneses

Sports team: Every Washington sports team! He follows them all.

Favorite SW spot: The Wharf—he especially likes watching the water

Best thing about his job: The support of his leaders and the compliments he gets daily

Proudest moment: When he was promoted to Supervisor of The Wharf team

Favorite Quote: “Moments are temporary, but memories are forever”—and he’s collecting some of his best memories right here in Southwest!

So when you’re out and about, be sure to say hello to Greg!

TEACHER

Continued from p. 1

is singing the praises of Ms. Harper and the Amidon-Bowen team. I recently interviewed Ms. Harper to get her view on her experience at Amidon-Bowen and how she feels about winning this distinguished honor.

What does it mean to you to be teacher of the year?

As someone born right here in Washington, D.C., this honor is truly humbling. The unforgettable students, fantastic staff and supportive Amidon-Bowen community that I have had the pleasure of serving with has been the backbone of this amazing honor. Our team works together to ensure that each child receives an excellent education, and I am elated that more folks in the District and in the world are able to see more of our great work.

This award is important to me, but it is equally as important to my family—I’m also glad that my parents and grandmother are proud of me! I’m very family-oriented, and it means so much that my 88-year-old grandmother gets to see her granddaughter “bring honor to the family.”

What advice do you have for new teachers just entering the profession?

Always remember why you were drawn to the profession. Keep a memento at your desk, on your phone, or somewhere in your classroom that reminds you of why you are inspired to do this work. You will have challenging days (sometimes weeks!), but always remember that you are needed for this work.

Our students are eager for a relationship with their teachers; be intentional about getting to know your students and their families on a deeper level.

Pursue excellence, but also remember that you will never finish all of your teacher to-do list! Decide on what is the most pressing and important, and learn to prioritize your work. The work that we do as teachers and educators is never easy; it is easy to fall into the trap of placing unreasonable pressure on yourself in the midst of your pursuit of excellence.

What’s your favorite part about teaching?

I love seeing students blossom over the course of the academic school year. Whether it is academically, socially, or both, I love watching students grow into their passion, purpose, and power.

I also LOVE watching students develop a voracious appetite for reading! It makes my teacher heart smile when students ask, “Can we please read for five more minutes?”

Were you surprised? How did you feel at the moment you found out you won?

Yes, I thought it was for an assembly. However, I did think it was a bit odd that Mayor Bowser was coming to do an assembly the day before Election Day!

I felt overwhelmed and it is the most surreal feeling that I’ve ever experienced in my life. It still feels surreal.

What are some of the best things about Amidon-Bowen?

One of my favorite parts about coming to work at Amidon-Bowen is the melodic sound of students’ laughter and joy throughout the day. Whether it’s during the Pre-Kindergarten’s educational songs sung throughout the hallway, or during partner work analyzing complex texts in the upper grades, our students are experiencing rigorous learning infused with joy.

Amidon-Bowen is like a family; many of our students’ parents have actually matriculated through Amidon’s doors as students themselves.

I’m super excited about STEAM (Science, Technology, Engineering, Arts, and Mathematics), which is a burgeoning area of excellence at our school! Our students have competed in citywide math and GeoPlunge competitions.

Our choir, led by Ms. Perry, is requested to sing at events all over the city, including for Mayor Bowser. Our sports program, led by Coach Briscoe and Coach Shelton and Coach Goode, have produced #1 DC City Champions for Track and Cheerleading!

Amidon-Bowen is a melting pot of cultures, ethnicities, races, socio-economic backgrounds, religions, and overall life experiences. Our students are able to form relationships with their peers that I hope will become lifelong bonds.

Over the next five years, what would you like to see for the Amidon-Bowen community?

Over the next five years, I would like to see the Amidon-Bowen school community blossom into an even *more* vibrant, connected, and thriving community. We are definitely on the rise; our school/staff culture, parent engagement, and academic gains are steadily increasing. In five years, I hope that our school ascends to the very top of the school ratings list, which reflects the great work that the folks in the building are already doing.

I’m also eager to have increased authentic STEAM experiences for our students to participate in from the moment that they enter Amidon-Bowen’s doors. Ideally, our students would also have 1:1 ratio for technology.

Additionally, I hope that our school could have increased partnerships with local Southwest businesses and establishments. We currently have several critical partnerships, and as the development of the Southwest area continues, I hope that our school can forge strong partnerships that allow our students’ academic and personal school experiences to flourish.

BLUES ALLEY SUMMER CAMP FOR KIDS

Blues Alley is synonymous with jazz and our summer camp for kids (ages 14-18) is synonymous with Blues Alley. Now in its second decade the camp has boosted the musical skills of novices and boosted novices in to our full-time, year-round youth orchestra.

The camp is conducted at St. Augustine’s Church and will take place between July 8th-19th, 2019 with additional details on-line at www.BluesAlley.org. **EARLY BIRD SPECIAL: \$395 BEFORE 12/31/18.**



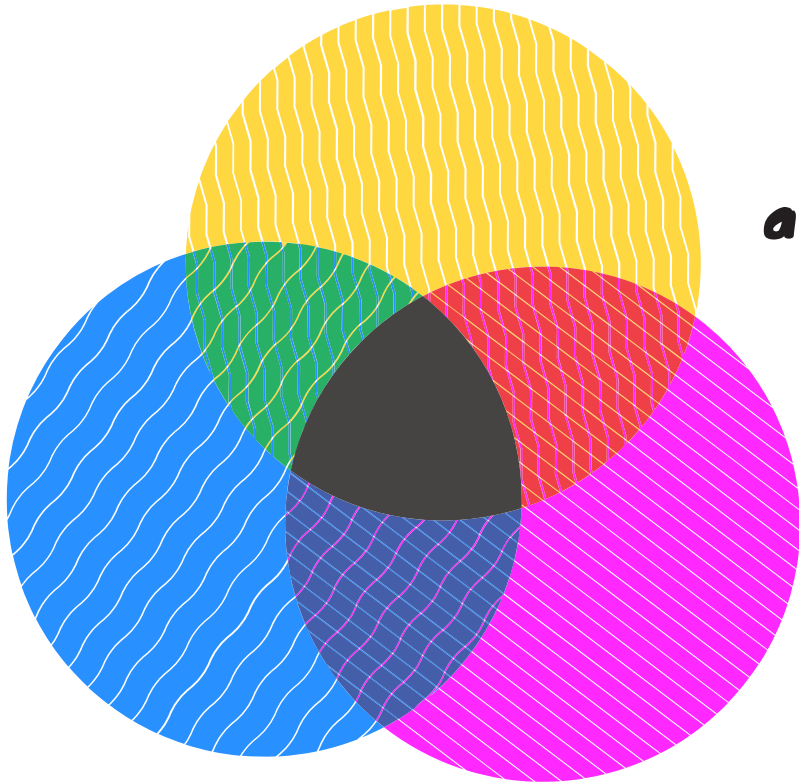
BLUES ALLEY JAZZ @ ST. AUGUSTINE’S CHURCH
555 Water Street, SW Washington, DC 20024
(202) 544-3230
www.BluesAlley.org

MA Moss Consulting

Telecommunications Asset and Inventory Management
 Billing Specialist

Maria Moss
 President

Mobile 202-607-3163 lesmecee3@outlook.com



***Enter Light Up Southwest -
a friendly neighborhood competition!
Contest Deadline: December 4***

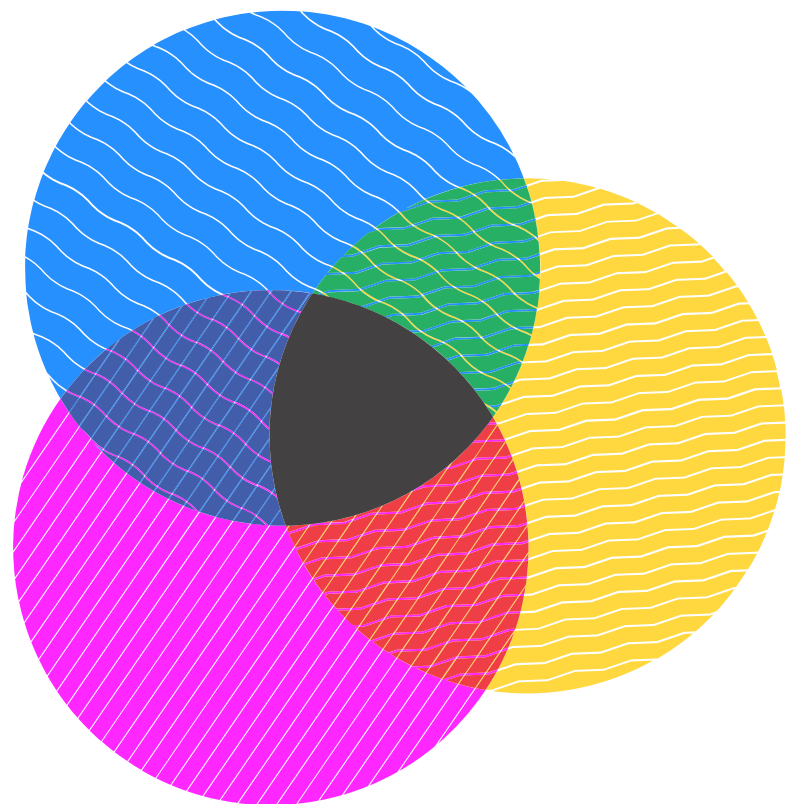
Show your creativity and holiday cheer by decorating your window, balcony or home. This contest is open to all SWDC residents.

More details: www.swbid.org/lightupsw

LIGHT UP SOUTHWEST

***Celebrate at the
Southwest Duck Pond
December 9th***

All are welcome to join the festivities on December 9 from 7-8pm for caroling, hot chocolate, and lights at the Southwest Duck Pond. The judges from Light Up Southwest will announce one winner from each category that evening.



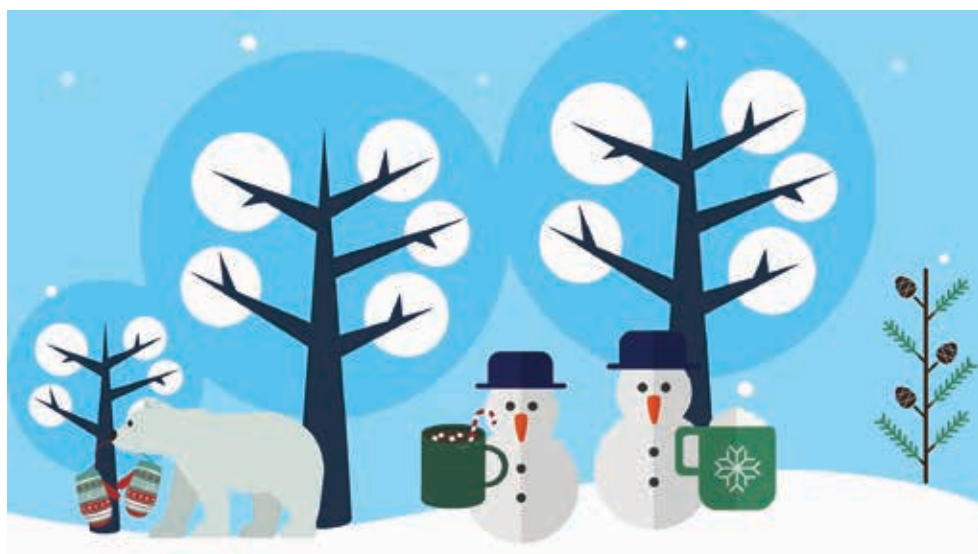


KID'S CORNER

Each month check out the most recent issue of the paper for activities and games to help you discover SWDC! Have a suggestion? Email us: editor@thesouthwester.com. Check out next month's issue for the answers!

Spot the difference!

Can you spot the 6 differences in the two winter wonderlands below?



1. _____
2. _____
3. _____



4. _____

5. _____

6. _____

Find the Southwest words!

Outdoors in the neighborhood

Q G Y D P X Z T C F T D D T O O T I N N
V A R U L F L T K A P B V O Z I H Y A J
H H Z C T A I J O N N P E M G T E B T P
K Y I K J B N S R L L A M J E L L Y I E
L Y N P H E A S H Y C M L V X B O A O A
W H Y O K T O N B M X J K P O Z T U N S
A Y E N R O I B N U A V Q O A J D D A T
T C L D X V E T V E R R K L A R T I L P
E P Y V M X B D A P K G K O J B K F S O
R U S X M Z J M J N H E H E L A Y I P T
F F M Y O A F I T A I C R P T X W E A O
R B J D N F R F Y N W C Q P A D H L R M
O T S C S N O X X T O U M H A R C D K A
N T F H A I N S P O I N T E X R K G G C
T S W G A R D E N S R F Z L M E K I J P
P Y A R D S P A R K T W D B P O Y I T A
A O D C R U C O A K O T G W P V R R M R
R K Q R U O U T T H E W H A R F A I K K
K X S U M T T Q E R C P Q R R T O Y A C
W C V H D S L R H A N C O C K P A R K L

East Potomac Park	Titanic Memorial	Waterfront Park	Lansburgh Park
Nationals Park	Hancock Park	Banneker Park	Hains Point
Fish Market	Canal Park	SW Gardens	Yards Park
Audi Field	Duck Pond	The Wharf	The Lot

Word scramble!

How many words can you make from “Southwest”?

[illegible]

Photo Contest Winner: Jean Link!



Photo: Jean Link

Waterfront sunsets never disappoint. The Water Taxi arrives, at Transit Pier at The Wharf.

GORDON PARKS

Continued from p. 4

Anderson and the educator Mary McLeod Bethune and there are photographs of unknown fishermen in Gloucester, Mass., and at the Fulton Fish Market in New York.

Mass Media (1945–1950) focuses on Parks' photography for major fashion and lifestyle magazines, including *Ebony*, *Circuit's Smart Woman* and *Glamour*. In 1949 he was hired as the first African American photographer for *Life* magazine where his work covered the high fashion scene in Paris and actress Ingrid Bergman on the set of the film "Stromboli." Along the way, he documented segregation, street life and poverty from Puerto Rico and Fort Scott to Paris and Portugal.

From a start in life with a struggle to survive, through these significant early years of his career, Parks would go on to more successes in the next fifty years. He was the first African American director of a major Hollywood film with the "Learning Tree" (1969), followed by "Shaft" (1971), as well as the author of many books, a musical composer and a poet.

In conjunction with this exhibit before it travels to three other museums in the next year, the National Gallery of Art is offering a range of public activities.

From Jan. 5 to Feb. 17, 2019, the National Gallery will present a retrospect of his



Photo: Gordon Parks

Self-Portrait, 1941

films and videos including "The Learning Tree."

From Feb. 8-10, the John Wilmerding Symposium on American Art and Community Celebration: Artists and the American Community will host dialogues with artists and scholars held in conjunction with the exhibition. A related community celebration on Feb. 9 and 10 will feature a program for all ages that blends photography, film, spoken word and music.

For more information about the exhibit, visit <https://www.nga.gov/exhibitions/2018/gordon-parks-the-new-tide-1940-1950.html>.

From Top to Bottom, Officina Keeps it Deliciously Simple

BY MIKE GOODMAN

Even with three stories of space, a marketplace, café, restaurant, rooftop bar and endless options for food and beverages, Officina still manages to stick to elegant simplicity with the food, flavors and ambiance. Pronounced oh-fee-she-nah, Michelin-star Chef Nicholas Stefanelli has graced Southwest with the presence of a well-designed, comfortable restaurant where you can enjoy Southern Italian-inspired dining and drinks, or buy something to take home and cook yourself.

The first floor café and bar is the right fit for any time of the day. Snack on a variety of rice fritters, which take you on a tour of Italian flavors, or choose from an assortment of salads and sandwiches with fresh, high-quality meats, cheese and greens. From pork shoulder to house-smoked sturgeon, to a flavorful rustic bread, to veal and pork meatballs in a subtle tomato sauce, you'll find yourself wanting to over-order and try it all. Luckily, the attentive staff is there to guide you to the right-sized conclusion.

Dinner in the trattoria was even more of a treat. In a world of Italian restaurants that ladle on the marinara or drown their pasta in cream, Officina offers a simpler cuisine where you can actually taste the featured



ingredient. The burrata stands on its own with only a hint of herbs, allowing you to enjoy its fresh taste and unique texture. The artichoke hearts on the dinner menu taste deliciously like artichokes—not like butter or marinade—while the artichokes served in the café come with a fried parsley with a crunch and taste that puts kale

chips to shame. The calamari isn't caked in corn meal like we so often see, and the chargrilled octopus was barely spiced and nicely grilled. While not quite as succulent as the octopus at other establishments, it was still refreshing to be able to taste the natural flavor of the seafood on the menu, instead of being overwhelmed by bread-ing and sauce.

The dinner menu is split into nine sections, with hundreds of combinations for placing an order. This is an evolution away from the stale, same-old choices of appetizer, entrée and dessert. This menu is meant for touring, from a variety of charcuterie and cheese, to options for truffles, a seafood section, lamb, pork, cuts of steak, veal, chicken and even tripe. Don't forget to order the family-style sides, with simple and fresh ingredients. Of course, at the center of all of this is the pasta section, featuring a combination of house-made pastas as well as pasta shipped directly from the Campania region in southwest Italy.

To be sure, there are still needed

tweaks. The bread was not ready when the kitchen opened for dinner, meaning the bread basket didn't arrive until after our first course was already on the table. Also, while I do enjoy 80's pop as much as the next Gen-X'er, the all-80's playlist seemed incongruous with the look and feel of the rest of the establishment's environment.

Of course, at an Italian-inspired restaurant as splendid as Officina, you have to try the vino, and I found the dry, light-bodied Soave pairing perfectly with the lighter fare and seafood. The menu also features signature cocktails and Italian beer, and on the second floor you'll find DC's only Amaro Library, featuring a multitude of Italian elixirs. When in Rome..., right?

The price point is to be expected—it's consistent with many of our new restaurants at the Wharf. But if you would rather avoid the cost of dining out, pick up food to make at home at the market on the first floor, and you'll be glad you did.

Finally, if you're looking to lounge, the open-air rooftop bar is as comfortable as they come, with a terrific view of the Channel. With firepits and even complimentary blankets, they are able to keep the rooftop open even on a chilly November night.

Officina really is more of a workshop, as the name means, than a restaurant. The options are abundant, but the flavor and feel is simple and wholesome. Take the trip to Officina. You'll enjoy the journey as well as the destination.

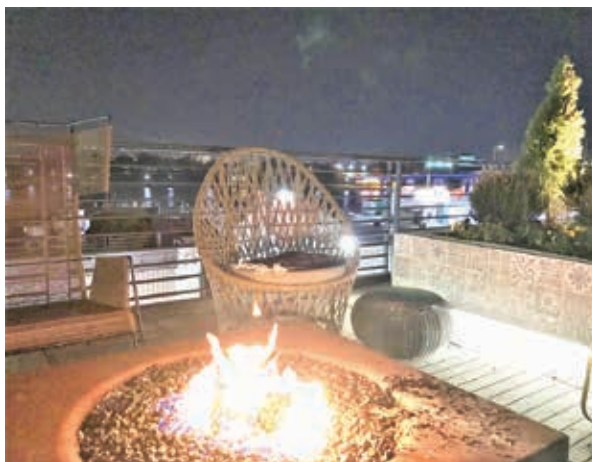


Photo: Mike Goodman

Firepits, complimentary blankets and a great view on Officina's rooftop



The Southwest Waterfront and Navy Yard are the newest areas of Washington to enjoy the benefits of a senior village:

Staff, volunteers, and vendors referred by your neighbors to help residents 62 years of age and older who wish to remain in their homes to do so with dignity and in the most cost-effective manner possible:

- Telephone check-ins
- Social and educational events
- Grocery, bank, and post office shuttle
- Day trips
- Transportation to medical appointments
- Basic handyman help

DECEMBER EVENTS

In the spirit of the season, all December events are open to non-Members. 202-656-1834 or events@dcwaterfrontvillage.org to RSVP.

Wednesday, December 5

11 am - 4 pm - Christmas at Hillwood, Lunch, and Faberge' Rediscovered Exhibit

Thursday, December 6

5 pm - Men's Networking and Happy Hour, Capital Yacht Club
7:30 pm - Theatre Evening to "All Save One," Undercroft Theatre

Monday, December 10

9 am - 12 pm Home Barbering Service
12:30 pm - Holiday Lunch, Tony Cheng's Mongolian Barbecue
2 pm - Historic Tour and Traditions of Chanukah, Sixth & I Synagogue

Tuesday, December 11

0:30 am - Alzheimer's Caregivers Support Group, Faith Presbyterian Church
4 pm - River Park Residents Holiday Open House

Wednesday, December 12

12 pm - Holiday Lunch, Clyde's Gallery Place
2 pm - Irving Berlin's "White Christmas" in VistaVision, Gallery Place Cinemas

Thursday, December 13

5pm - Friends of Waterfront Village Holiday Gathering, Harbour Square

Thursday, December 20

2pm - Village Book Club: "The Soul of America", Politics & Prose
7pm - Christmas Concert to Benefit Waterfront Village, St. Augustine's Episcopal Church

Tuesday, December 25,

1:30 pm - Christmas Day Organ Recital, Washington National Cathedral

Every Thursday

Navy Yard Shopping Trip to Bank of America, Harris Teeter, Harry's Reserve, and U.S. Post Office.

For more information: www.dewaterfrontvillage.org/calendar, call 202-656-1834, or email events@dcwaterfrontvillage.org

Learn where you can attend a Village public meeting or support its work as a volunteer or donor* by calling 202-656-1834 or visiting our website: www.dewaterfrontvillage.org

* Waterfront Village receives neither District nor Federal public funds. We are a local, neighborhood 501(c)(3) organization wholly self-supported by membership dues and donations. Waterfront Village is a member of the national Village to Village network and operates under the auspices of the District Office on Aging.

Finding Connection while Finding Your Voice at Komen Toastmasters

BY CHRISTINA SCHELTEMA

Komen Toastmasters offers an important connection with others and a safe, supportive environment for people to learn and practice new skills. According to Janelle George, Komen's Vice President of Membership, "People join to work on public speaking skills, but they find that they learn how to lead, how to coordinate. Most importantly, they meet people they think that they have nothing in common with, and find shared experiences."

Komen's current Club President, Gerry Counihan, survived a home invasion which left him hospitalized with injuries so severe that he spent a month in the hospital learning to walk and talk again. However, these injuries haven't stopped him. As a former member of Toastmasters who served in several leadership roles in DC Toastmasters clubs, he was inspired to join Toastmasters again by someone he once mentored, who has since gone on to become the current President of Toastmasters International.

"I came back to Toastmasters to hone my speaking skills, if the opportunity arose for me to become a motivational speaker for conferences and retreats," Counihan said.

Toastmasters also helps him to serve as a Chaplain for the National Rehabilitation Hospital and a tour guide for the World War II Memorial. Counihan first joined Toastmasters in the early 1990s to help him overcome a speech defect and a learning disability. When he moved to DC in 1991 to work in the office of the late Senator John McCain, he joined the Senate Toastmasters Club. His Toastmasters training led him to a twelve-year stint as a



Photo: Komen Toastmasters

Komen Toastmasters meeting in November included Christina Scheltema, Regina Curry, Gus Ferro, Gerry Counihan, Janelle (Jolleen) George, Marlene Fultz and Eric Delk.

US Capitol tour guide. "Once a tour guide, always a tour guide," he said.

Gus Ferro, one of Komen's newest members, joined to work on his public speaking skills. "I want to learn to communicate my message and foster my leadership skills. My passion is to inspire others with a message of hope," he said.

Komen's membership has always been diverse, with members ranging in age from 20-somethings to retired people. Some members are DC natives; some were born overseas. Students, stay-at-home moms, full-time workers, freelancers and entrepreneurs have all found their voice through Komen Toastmasters.

Komen Toastmasters was founded nearly 22 years ago in partnership with the Susan D. Komen Foundation to help its members advocate for themselves and others with breast cancer. Although Komen Toastmasters is no longer focused on breast cancer advocacy, its members have been active in the Race for the Cure and some members are survivors of other cancers.

See the club website for more information: <https://www.toastmasters.org/Find-a-Club/00008714-00008714>.

Поздравляю с Рождеством! (Pozdravliayu s Rozhdestvom!) —"Merry Christmas!"

The Southwest Chamber Players announce their 22nd annual Christmas concert at Saint Augustine's Church, 555 Water St., SW, on Thursday, Dec. 20, beginning at 7 p.m. In addition to the traditional assortment of carols, this year's edition will have a distinctly Russo-centric feel, in terms of both program and performers. Joining in the festivities will be Marje Palmieri and Joyce Bouvier, soprano; Vasily Popov (plus family) and Julia Goudimova, cello; Gwyn Jones, flute; Nancy Genovese, clarinet; Dilyana Kirova, bassoon; and Stephen Brown and David Ehrlich, piano. On the program will be works of Tchaikovsky and Shostakovich, together with Bach and Mozart, and some wonderful Italian baroque songs. Admission is free, although the Waterfront Village, who sponsors the concert, will greatly appreciate donations.

Is your Friday night *Soulful, Musical & Joyful?*

It's time to experience

District **SHABBAT** Washington Hebrew Congregation in the ♥ of DC

Every month at St. Augustine's Episcopal Church, 555 Water St. SW, Washington, DC 20024



District Shabbat is ...

The high energy of DC with the deep spirituality of Reform Judaism.

An all-ages downtown Shabbat experience.

Diving into the week's Torah portion with WHC's clergy over drinks and hors d'oeuvres.

A fun and engaging service for families with young children.

Lifting your voice with folk-rock musicians Dan Nichols and Alan Goodis.

A catered on-site dinner following the service.

WHC bringing the heart of DC to downtown DC.

Friday, December 21

5:30 pm Tot Shabbat, 6:15 pm Shot of Torah, 7:00 pm Shabbat Service, Optional dinner follows

Learn more & RSVP: whctemple.org/DistrictShabbat

St. Matthew's Welcomes Reverend Katherine Chatelaine-Samsen

BY JUDSON JAMES

St. Matthew's Lutheran Church is excited to welcome their new associate pastor, Reverend Katherine "Katie" Chatelaine-Samsen. Rev. Chatelaine-Samsen has been called to serve as Pastor of Mission and Outreach, a role that is shared with First Trinity Lutheran Church in Judiciary Square. She joins Reverend Phillip Huber in service with St. Matthew's.

A native of Minnesota, Rev. Chatelaine-Samsen has lived in the DC area for the past six years. Her ministry experience includes serving as Vicar at Christ Lutheran Church (Washington, DC), Worship Assistant at Holden Village (a Lutheran retreat center in the North Cascade Mountains), and as a seminary intern with the Princeton University Office of Religious Life. She also brings a background in non-profit fund development and has served with a number of DC-area nonprofits in this capacity.

Rev. Chatelaine-Samsen holds a Master of Divinity from Princeton Theological Seminary in Princeton, NJ and completed additional coursework at Gettysburg

Seminary in Gettysburg, PA. She also has a Bachelor of Arts in Religion and Political Science from St. Olaf College in Northfield, MN. Rev. Chatelaine-Samsen was ordained to the Ministry of Word and Sacrament on Sept. 6, 2018.

Q: What excites you about your call to St. Matthew's?

There's a lot of great energy right now among the members of St. Matthew's. We're getting ready to open our new building by the end of this year and are looking forward to expanding our connection with the Southwest community with the resources it will provide. Additionally, we're exploring ways to continue to partner in mission and ministry with our sister congregation, First Trinity in Judiciary Square, and are developing different models for how we can "be church" together. My call as Pastor of Mission and Outreach means that I will be spending a lot of time in the neighborhood, connecting with residents and developing ways for the congregation to build relationships with and serve our neighbors—Jesus' ministry was very relational and included building communities, and I think that's



Reverend Katherine "Katie" Chatelaine-Samsen

what we're called to do as a church.

Q: What is your hope for St. Matthew's?

I hope that St. Matthew's can be a convening space for the Southwest community. We have lots of great meeting spaces, a coffee shop/café called Sacred Grounds Café, a flexible worship space that can be

used for concerts and theater, a hostel, facilities for an emergency shelter and more. We're really blessed with our new building and want to use it in a way that helps to foster connection and community among our neighbors.

Q: What is your hope for the Southwest Community?

As I've been getting to know Southwest, I've noticed both the rapid pace of development and change, as well as pockets of long-standing connected communities. I hope that Southwest is a place where a strong sense of community remains, even in the midst of change, and that it serves as a model for other rapidly changing areas of the city in regards to its sense of community, welcome and inclusion.

Q: What do you want Southwest residents to know about you?

I enjoy spending time outside, whether it's running, hiking, biking, walking or simply enjoying a cup of coffee at an outdoor cafe. I also enjoy getting to know new people and neighborhoods in DC, and especially look forward to connecting with the Southwest community.

Christmas Tree Give-away & Open House at St. Matthew's on Dec. 15

BY REV. PHILLIP C. HUBER

St. Matthew's will hold its Annual Christmas Tree Event and an Open House at the new church building, 222 M St., SW, on Saturday, Dec. 15 at 1 p.m.

The Christmas Tree Event will be held in the newly opened Courtyard Space, accessed through the gateway located on Delaware Ave. Trees are free to those who cannot afford them, or those who are able may make a donation to St. Matthew's to support the soon-to-form Southwest Youth and Children's Choir. Those who would like a Christmas tree should email office@stmatthewsdc.org or call 202-484-3189 to make a reservation. Those with a reservation can pick up their tree from 1-2 p.m. and those without a reservation can receive a tree, if any are left, after this time.

The Open House will be held from 1-3 p.m., featuring hot beverages, refreshments and tours of the new building. The tour will include the sanctuary space, the new community space for meetings and events, and the magnificent northeast elliptical wall that allows sunlight to trace along its path throughout the day.

The First Worship Service in the new building will be a festive Service of Lessons, Carols and Communion beginning at 7 p.m. on Christmas Eve, Monday, Dec. 24. The Congregation is also pleased to announce its newly formed Shared Ministry with First Trinity Lutheran Church, at 501 4th St., NW, moving to a ministry of "One Mission—Two Locations." St. Matthew's and First Trinity will share resources, staff, programming and outreach.

Over 300 Arthur Capper Residents and Families have Thanksgiving Dinner at The Anthem

BY SOUTHWESTER STAFF

When popular headliners grace The Anthem, 6,000 screaming fans can be seen standing shoulder-to-shoulder. This Thanksgiving, however, The Anthem transformed into an intimate family-like atmosphere to provide a sense of normalcy during this holiday season for over 300 Arthur Capper residents, and their families, who lost so much in our community.

Arthur Capper residents were suddenly displaced in September, when a four-alarm fire tore through the 162-unit community that was devoted strictly to seniors. The fire was so large that it was seen across the region, and its cause is still under investigation. While some residents have moved into their new homes, many Arthur Capper residents still remain in temporary housing around the city. To ensure that all residents were able to attend this special afternoon, Arthur Capper residents and their guests were transported to and from the event, including in the Southwest Shuttle. For many, this



Photo: Roxie B. Photography

Volunteers serve a traditional Thanksgiving meal to residents prepared by Cathal Armstrong, chef and owner of Kaliwa.

meal served as not only a place to gather with the community that is now so scattered, but it also provided the opportunity to have a traditional Thanksgiving meal, something they may not have otherwise experienced in the temporary housing, particularly those who are temporarily residing in hotels.

Residents and their guests were hosted by Edgewood Management, the management company for the Arthur Capper Senior Building, and the building's owners, Urban Atlantic and Forest City, in addition to the Community Services Foundation, Hoffman-Madison Waterfront, PN

Hoffman, and The Anthem.

Kaliwa's chef and owner Cathal Armstrong prepared the hundreds of Thanksgiving dinners and the Southwest and Southeast community and residents served as volunteers for the event, including Monty Hoffman, founder of PN Hoffman and developer of The Wharf, and his family. In a pre-event press release, Hoffman said, "This holiday season is about giving thanks, giving back and coming together. We have been so fortunate

to be a part of this community and are proud to be able to support the Arthur Capper residents and their families with a Thanksgiving Day celebration."

Since the tragic fire, the community has come together and rallied around the residents of Arthur Capper. This support will continue to be needed for many of the seniors throughout and after the holiday season. Those who are looking to help should refer to the Capitol Hill Community Foundation webpage, <https://www.capitolhillcommunityfoundation.com>, for the latest needs of the community.



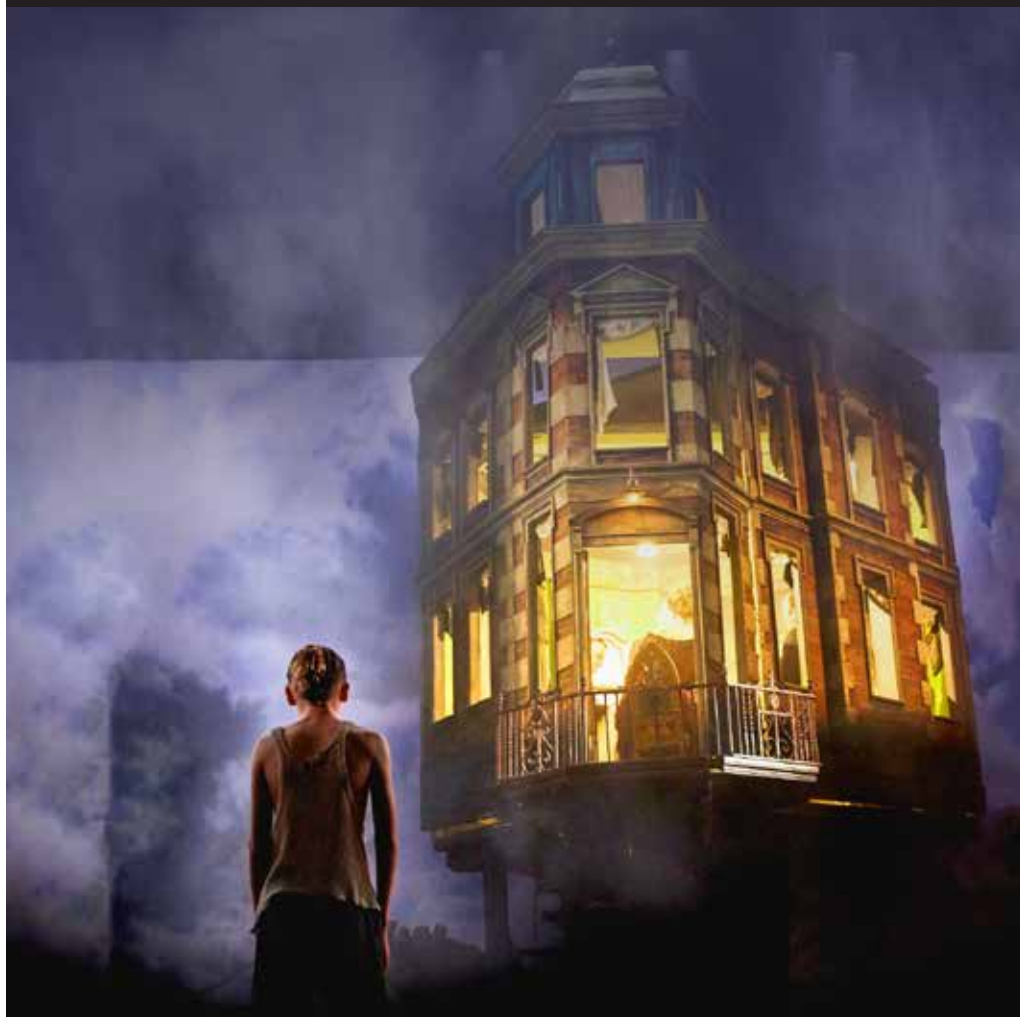
SHAKESPEARE THEATRE COMPANY

FREE TICKETS. NO CATCH.

FREE WILL is a year-long continuation of STC's annual Free For All, offering free tickets for every STC mainstage production in the season. Tickets are released once a week and can be reserved in person, over the phone or online.

TO LEARN MORE, VISIT
SHAKESPEARETHEATRE.ORG/FREEWILL
 OR CALL 202.547.1122

FREE WILL



From the director of *THE CROWN* and *BILLY ELLIOT*

AN INSPECTOR CALLS

By J.B. Priestley | Directed by Stephen Daldry

NOW PLAYING THROUGH DECEMBER 23

Photo by Mark Douet.



The Panties, The Partner and The Profit

SCENES FROM THE HEROIC
LIFE OF THE MIDDLE CLASS

NOW PLAYING THROUGH JANUARY 6

By **David Ives**

Inspired by the work of Carl Sternheim

Directed by **Michael Kahn**

Photo of Kimberly Gilbert by Tony Powell.

COMMUNITY CALENDAR

DECEMBER

SAT 1, 11:30 A.M.-4 P.M. Winterfest, the annual weekend-long festival at Nationals Park. General admission tickets are \$39 for adults (13+) and \$29 for children (12 & under). Featuring Nationals players, coaches and front office staff. Indoor and outdoor activities including autographs, curling stations, interactive games, clubhouse tours, batting cages, and photo opportunities with Nats mascots, the Bullpen Cart and Santa! For tickets and details, see nationals.com/Winterfest

SAT 1, 7 P.M. Faith and Film presents “Black Klansman,” Directed by Spike Lee, Rated R. In the midst of the 1970s civil rights movement, Ron Stallworth becomes the first Black detective on the Colorado Springs Police Department, and infiltrates the local chapter of the Ku Klux Klan. Subtitles for the hearing impaired. Beverages and snacks provided. Donations Accepted. Westminster Presbyterian Church, 400 I St. SW

SAT 1, 3 P.M. Mitten Craft, Children ages 4-12 are invited to make a mitten craft. Children under 9 years old must be accompanied by a caregiver. SW Library, 900 Wesley Pl. SW, 202-724-4752

SUN 2, 6:30 P.M. Screening of “The Sign of the Cross” (1932), St. Dominic’s Parish Center in the basement of the Priory, 630 E St. SW

MON 3, 6:45 P.M. Screening of “DeLovely, based on the life of composer and lyricist Cole Porter, presented in collaboration with Arena Stage in observance of the ongoing production of Porter’s musical “Anything Goes.” SW Library, 900 Wesley Pl. SW, 202-724-4752

WED 5, 6:30 P.M. Writer’s Workshop, SW Library, 900 Wesley Pl. SW, 202-724-4752

FRI 7, 6:30 P.M. Game Night, 1st Friday of every month. St. Augustine’s Episcopal Church, 555 Water St. SW, 202-554-3222. www.staugustinesdc.org

SAT 8, 3 P.M. LEGO Club, Children ages 4-12 are invited to design and create their own LEGO structures. Children under 9 years old must be accompanied by a caregiver. SW Library, 900 Wesley Pl. SW, 202-724-4752

SUN 9, Noon-5 P.M. Holiday Makers Market, Browse favorite local makers from last year’s market including Sneekis and Grey Moggie in addition to new vendor Inkerbell, and more to come! East City Bookshop, https://www.eastcitybookshop.com/hours-and-location

SUN 9, 2:30 P.M. P.A.L. (People Animals Love) Dog Visit, Children ages 4-12 are invited to read aloud to a P.A.L. dog. Children under 9 years old must be accompanied by a caregiver. SW Library, 900 Wesley Pl. SW, 202-724-4752

SUN 9, 6:30 P.M. Screening of “Francis of Assisi,” St. Dominic’s Parish Center in the basement of the Priory, 630 E St. SW

MON 10, 6-9 P.M. CHAMPS Sip & Shop, Traveling wine-tasting and Capitol Hill shopping experience. Kicking off at Eastern Market Metro Plaza. East City Bookshop is keeping the doors open an extra hour for perusal and sipping. https://www.eastcitybookshop.com/hours-and-location

MON 10, 7 P.M. ANC 6D Monthly Business Meeting, 1100 4th St. SW, 2nd Floor

TUES 11, 1:30 P.M. Literary Book Group, Copies of this month’s selection, “Devil In the White City” by Erik Larsen are available at the information desk. SW Library, 900 Wesley Pl. SW, 202-724-4752

WED 12, 9-10:30 A.M. Amidon-Bowen Open House for Prospective Families, Meet the principal and current parents, take a guided tour of the school, briefly observe classrooms and ask questions about the school. For more information for prospective parents, please visit http://www.amidonbowen.org/parents/admissions/. For more information about other school and community events, see http://www.amidonbowen.org/calendar/. Amidon-Bowen Elementary School, 401 I St. SW

WED 12, 11 A.M.-2 P.M. The Southwest Waterfront AARP Chapter 4751 invites members and friends to annual holiday luncheon. Reservations are \$35 per person. Wheelchair accessible-onsite parking available. The Bolling Club-Spaatz Room (2nd Floor), Joint Base Anacostia-Bolling, 50 Theisen St. Main Entrance Gate at Arnold Gate-MacDill Blvd. SW. For information contact Betty Jean Tolbert Jones, President, at bettyjeantolbertjones@yahoo.com or 202-554-0901.

WED 12, 4 P.M. Holiday House Building, Children are invited to build holiday houses from edible materials. Children under 9 years old must be accompanied by a caregiver. SW Library, 900 Wesley Pl. SW, 202-724-4752

WED 12, 5-7 P.M. SW Neighborhood Happy Hour at Union Stage (ground level), \$1 off Union Stage drafts & \$10 half pizza and pint, 740 Water St. SW at The Wharf

WED 12, 6:30-7:30 P.M. Thomas Page McBee (“Amateur”) and Soraya Chemaly (“Rage Becomes Her”). Two incisive writers working on gender, anger, and masculinity discuss the intersection of masculinity and female anger. Conversation followed by Q&A and signing. East City Bookshop, https://www.eastcitybookshop.com/hours-and-location

WED 12, 6:30 P.M. Aspiring Writer’s Circle, meetup for new and aspiring writers. SW Library, 900 Wesley Pl. SW, 202-724-4752

FRI 14, 6-10 P.M. D.C. Strings Holiday Concert, St. Augustine’s Episcopal Church, 555 Water St. SW

SAT 15, 1-3 P.M. Thinking About Jazz, Lena Horne: From Jazz Voice to Political Activist, Lena Mary Calhoun Horne was an American singer, dancer, actress and civil rights activist. This presentation of Lena’s life and music will be offered by Patricia Willard who knew her personally. Light

lunch served. Westminster Presbyterian Church, 400 I St. SW

SAT 15, 3 P.M. Cinema Saturday, Children are invited to join us for screening of an age-appropriate movie. Children under 9 years old must be accompanied by a caregiver. SW Library, 900 Wesley Pl. SW, 202-724-4752

SAT 15, 5-8 P.M. St. A’s International Advent Party, Share your favorite dish from around the world. Holiday Sing-A-Long, Best Holiday Hat Contest and a Visit from St. Nicholas. St. Augustine’s Episcopal Church, 555 Water St. SW

SUN 16, 6:30 P.M. Screening of “Joyeux Noel” (2005), St. Dominic’s Parish Center in the basement of the Priory, 630 E St. SW

WED 19, 6-8:30 P.M. Thelma D. Jones Breast Cancer Fund Holiday Support Group Meeting, Meeting will feature children of parents (living or deceased) with a breast cancer diagnosis. Also, Rev. Dr. Beryl Dennis will present findings on “Caring for the Spirit of the Family Caregiver.” Recipient of the Evelyn B. Curtis Spirit Award will be announced. RSVP by Friday, Dec. 14 at thelma@tdjbreastcancerfund.org or call 202-251-1639. St. Augustine’s Episcopal Church, 555 Water St. SW

WED 19, 6:30 P.M. Learn and Write, SW Library, 900 Wesley Pl. SW, 202-724-4752

THURS 20, 6:45 P.M. ABC Committee, ANC6D, Alcohol license applications, renewals, enforcement, and other issues. Contact: Coralie Farlee, Chair, ABC Committee, 202-554-4407, cfarlee@mindspring.com. SW BID, 420 4th St. SW

THURS 20, 7 P.M. Поздравляю с Рождеством! (Pozdravliayu s Rozhdestvom!) Merry Christmas! The Southwest Chamber Players announce their 22nd annual Christmas concert. Enjoy a traditional assortment of carols, as well as a distinctly Russo-centric feel. Works of Tchaikovsky and Shostakovich, together with Bach and Mozart, and Italian baroque songs. Free, although the Waterfront Village, who sponsors the concert, will greatly appreciate donations. St. Augustine’s Church, 555 Water St. SW

FRI 21, 4-10 P.M. Washington Hebrew Congregation Shabbat and Services, St. Augustine’s Episcopal Church, 555 Water St. SW. Learn more at https://www.whctemple.org/districtshabbat

SAT 22, 3 P.M. Cinema Saturday, Children are invited to join us for screening of an age-appropriate movie. Children under 9 years old must be accompanied by a caregiver. SW Library, 900 Wesley Pl. SW, 202-724-4752

SUN 23, 6-9 P.M. Blue Christmas Blues with Vince Evans, \$5 Admission. Food for Sale. Westminster Presbyterian Church, 400 I St. SW

MON 24, 5 P.M. Christmas Eve Service of Lessons and Carols, St. Augustine’s Episcopal Church, 555 Water St. SW

MON 24, 5:30-7 P.M. Community Christmas Party at Westminster, Games, Caroling, Last Minute Christmas Shopping Table, Treats, and a visit from St. Nick. All Invited! Westminster Presbyterian Church, 400 I St. SW

TUES 25, 10 A.M. Christmas Day Service of the Holy Eucharist, St. Augustine’s Episcopal Church, 555 Water St. SW

WED 26, 6:30 P.M. Nightwriters, SW Library, 900 Wesley Pl. SW, 202-724-4752

SAT 29, 1:30 P.M. SW Library Book Discussion, “The World Without Us” by Alan Weisman. Copies are available at the information desk. SW Library, 900 Wesley Pl. SW, 202-724-4752

SAT 29, 3 P.M. LEGO Club, Children ages 4-12 are invited to design and create their own LEGO structures. Children under 9 years old must be accompanied by a caregiver. SW Library, 900 Wesley Pl. SW, 202-724-4752

MON 31, 9 P.M.-12:30 A.M. New Year’s Eve Celebration with Lil Margie & the Blues Brothers, \$30 ticket; \$40 after 12/15. Featuring: Lil Margie Clark, vocals, Bobby Felder, organ, Jacques Johnson, Jr. guitar, Brian Lenair, sax, Chuck Carthan, bass, Kenny Powell, drums. Westminster Presbyterian Church, 400 I St. SW

WEEKLY, BIWEEKLY

ADULT BEGINNER TENNIS, Saturdays, 1-2 P.M. Ages 18+, King Greenleaf Recreation Center

ALL-LEVELS YOGA CLASS, Wednesdays, 8-9 A.M. Bring a mat if you have one. No set charge; donations welcome. For more information, call the instructor, Pamela Wilson, 202-746-6654 or wilsonpj108@verizon.net. St. Augustine’s Episcopal Church

ALZHEIMER’S ASSN CAREGIVER SUPPORT GROUP, 2nd Tuesdays of the month, 10:30-11:30 A.M. Free and open to the Public. Faith Presbyterian Church, 4161 S. Capitol St. SW

ARTS FOR KIDS, Tuesdays 5-6 P.M. Ages 6-13, Michelle & Akaya, King Greenleaf Recreation Center

ARTY AFTERNOON, Mondays 4:30 P.M. Join us in the Children’s Room for fun arts and crafts. For children ages 4-12. Children under 9 must be accompanied by a caregiver. SW Library

BALLET, Saturdays, 10:15-11:15 A.M. Ages 6-12, Alexis Miller & Jilian Carter, Randall Recreation Center

BALLET, Saturdays, 11:15 A.M-12:15 P.M. Ages 3-5, Alexis Miller & Jilian Carter, Randall Recreation Center

BASKETBALL, Ages 5-6 on Tues. & Thurs., 5-6 P.M.; Ages 7-8 on Thurs. & Fri., 6-7 P.M.; Ages 9-10 on Tues. & Thurs., 7-8 P.M.; Ages 11-12 on Tues. & Fri., 7-8 P.M.; Ages 13-14 on Fri., 8-9 P.M. All at King Greenleaf Recreation Center

BLUES MONDAYS, 6-9 P.M. Various Blues musicians and singers featured each Monday. \$5 cover and food for sale. Schedule at www.westminsterdc.org/blues.html. Westminster Presbyterian Church

BREAD FOR LIFE, Sundays, 8-8:45 A.M. Free Breakfast, Hot Breakfast of eggs, pancakes, sausage, biscuits, juice and coffee. Seeking Volunteers to help cook, serve and set-up. Contact: chee-cheemathis@staugustinesdc.org. St. Augustine’s Episcopal Church Community Room

COLOR CLUB, Mondays, 7 P.M. Children and families invited to join. Special coloring sheets and supplies are available. SW Library

COMMUNITY BREAKFAST, Every 3rd Saturday, 9-11 A.M. Rear entrance of Christ United Methodist Church, 900 4th St. SW, across from SW Library. \$5.00 donation

COOKING LEVEL 1, Wednesdays, 5:30-7 P.M. (Boys) Ages: 8-13 Safiyyah Aleem-Woods, King Greenleaf Recreation Center

DC DRAGON BOAT CLUB, Saturdays, 8:30 A.M. Come to The Anchor Store at the DC Wharf located at 709 Wharf St. SW and join a free paddling session with the DC Dragon Boat Club. Beginners welcome! First three practices are free! Sign up at www.dcdragonboat.org/. Questions? Email info@dcdragonboat.org

DOMESTIC VIOLENCE WALK-IN CLINIC, Wednesdays, 1-4 P.M. Westminster Presbyterian Church, 202-484-7700

EVENING PRAYER, Tuesdays, 6:30 P.M. St. Augustine’s Episcopal Church

FEDERAL CITY RUNNERS TUESDAY NIGHT GROUP RUN, Tuesdays, 6:30 P.M. Meet by Waterfront Metro exit (near Safeway). Run distance: 4-5 miles. Runners of all paces welcome! Run year-round in rain, snow, or shine. RSVP at www.meetup.com/fcrunners to receive run updates or just show up!

FITNESS BOOTCAMP, Mondays and Wednesdays, 6-7 P.M. Ages 18+, King Greenleaf Recreation Center

FITNESS BOOTCAMP, Wednesdays and Fridays, 6:30-7:30 P.M. Ages 18+, Randall Recreation Center

FOOTBALL 8 U, Mondays, Wednesdays and Fridays, 6-7 P.M. Ages 7-8, Ronald Hines, King Greenleaf Recreation Center

FRIDAY FILMS, Fridays, 3 P.M. Join us for a showing of a surprise film, rated G or PG. Children under 9 must be accompanied by a caregiver. SW Library

FRIDAY NIGHT FISHING, 5:30-8:30 P.M. Free event for kids and families, and fisher-folks young and old! At the docks at Diamond Teague Park (in SE across from the baseball stadium)

GAME CLUB, Fridays, 4 P.M. Children ages 6-12 are invited to join us to play board games. Children under 9 years old must be accompanied by a caregiver. SW Library

GIRL SCOUT TROOP 4298 is looking for troop leaders for its 2018-19 year. If you live in the neighborhood and would like to give back to local girls, please contact Monica at 202-468-9620.

GOTTA SWING LINDY HOP & JITTERBUG CLASSES, Wednesdays 7-8:30 P.M. Westminster Presbyterian Church

HAND DANCING, Saturdays, 1-3:30 P.M. Ages 55+, Volunteer, King Greenleaf Recreation Center

JAZZ NIGHT IN SW, Fridays, 6-9 P.M. Various Jazz musicians and singers featured each Friday. \$5. Food for sale. Schedule at www.westminsterdc.org/jazz.html. Westminster Presbyterian Church

JOINT WORSHIP, Westminster Presbyterian Church and Riverside Baptist Church. Sundays, 11 A.M.-Noon

JUNIOR BEGINNER TENNIS, Saturdays, 11 A.M.-Noon. Ages 12 & under, King Greenleaf Recreation Center

KADAMPA MEDITATION CENTER, Thursdays 7:15-8:30 P.M. Developing Positive Habits: Meditation Class. Also **Sundays, 10-11 A.M. Dharma in Daily Life—Meditation Class.** Both days are \$12 per class (\$6 for students/seniors/unemployed). Kadampa Meditation Center DC, 1200 Canal St. SW. More info see: meditation-dc.org or call 202-430-6540

KEYS TO FREEDOM N/A Group, Tuesdays, Noon-1 P.M. St. Augustine’s Episcopal Church

The KIWANIS CLUB OF SOUTHWEST WATERFRONT, every first and third Monday, 6:30-7:30 P.M. Christ United Methodist Church

KOMEN TOASTMASTERS INTERNATIONAL, meets every 1st and 3rd Saturday, 10:30 A.M.-Noon. All are welcome. If you don’t see us in the main church, look for us downstairs. Details at: https://www.toastmasters.org/Find-a-Club/00008714-00008714. Westminster Presbyterian Church

MAKER CAMP, Wednesdays, 4:30 P.M. Ages 6-12 are invited to join us for hands-on, creative workshops. No registration necessary. Children under 9 years old must be accompanied by a caregiver. SW Library

NARCOTICS ANONYMOUS, Wednesdays, 7-8 P.M. Westminster Presbyterian Church

OPEN GYM, Saturdays, 10:30 A.M.-1:30 P.M. Ages 18+, Staff, King Greenleaf Recreation Center

PAJAMA STORY TIME, Thursdays, 6 P.M. Evening story time where pajamas are encouraged but not required. Designed to delight children of all ages. Children under 9 years old must be accompanied by a caregiver. SW Library

PICKLE BALL, Tuesdays, 10:30 A.M.-12:30 P.M. Ages 55+, Volunteer, King Greenleaf Recreation Center

POM POM, Tuesdays and Thursdays, 5-6 P.M. Ages 10-14, Chamia Day, Randall Recreation Center

READING CLUB, Thursdays, 4 P.M. Children ages 4-12 are invited to drop in for independent or quiet partnered reading while enjoying a snack provided by the library. Children under 9 years old must be accompanied by a caregiver. SW Library. **Note:** The library is closed Nov. 22.

SEATED YOGA TWICE A WEEK, Mondays, 11 A.M-Noon and Wednesdays, 4-5 P.M. Pamela Wilson guides a gentle series of movements designed to free the joints and ease the mind. This is part of Westminster’s Wellness program. Westminster Presbyterian Church

SENIOR BINGO, Mondays and Thursdays, 1-3 P.M. Ages 55+, Charles Jones, King Greenleaf Recreation Center

SOUTHWEST RENEWAL A/A Group, Wednesdays, 7 P.M. St. Augustine’s Episcopal Church

SOUTHWEST WATERFRONT AARP CHAPTER #4751, monthly luncheon meetings are held **every third Wednesday at noon.** Current AARP members, prospective members and visitors are welcome. Lunch is available for \$5. River Park Mutual Homes’ South Common Room, 1311 Delaware Ave. SW. For further information, contact Chapter President Betty Jean Tolbert Jones, bettyjeantolbertjones@yahoo.com or 202-554-0901

STORY TIME AT THE LIBRARY, Join us for books, songs, rhymes and finger plays as we continue to strengthen early literacy skills while enjoying stories together. **Baby/Toddler Story Time on Mondays, 10:30 A.M.** for children ages birth to 2 years and their caregivers. **Preschool Story Time on Wednesdays, 10:30 A.M.** for ages 3 to 5 and their caregivers, followed by an easy craft activity. **Family Story Time on Saturdays, 10:30 A.M.** for all ages, followed by playtime. Children under 9 must be accompanied by a caregiver. SW Library

SUPREME TEENS, Mondays, 6:30-7:30 P.M. Ages 13-19, King Greenleaf Recreation Center

SUPREME TEENS, Wednesdays, 4-6 P.M. Ages 13-18, Randall Recreation Center

SW FREEWAY, NA, Wednesdays, 7-8 P.M. Westminster Presbyterian Church

SW WATERFRONT HOOKS AND NEEDLES GROUP, Mondays 2-4 P.M. Velo Café on Maine Avenue at the Wharf

SWING DANCE CLASSES, Wednesdays, 7-9:30 P.M. Westminster Presbyterian Church

TEEN COLOR CLUB, Thursdays, 4:30 P.M. Teens ages 13-19 are invited to get creative with colored pencils, other materials and coloring sheets while socializing. SW Library

TEEN LOUNGE, Tuesdays, 4:30 P.M. Ages 13-19 are invited to hang out and participate in fun activities, games and socializing. SW Library. **Note:** The Library is closed Tuesday, December 25th.

TENNIS ABC-Agility, Balance, Coordination, Mondays and Wednesdays, 5-6 P.M. All ages. King Greenleaf Recreation Center

TINY TOTS, Mondays and Wednesdays, 10:30-11:30 A.M. Ages 15 months-3 years, Michelle Edmonds, King Greenleaf Recreation Center

TINY TOTS, Tuesdays and Thursdays, 10:30-11:30 A.M. Ages 15 months-3 years, Karena Houser-Hall, Randall Recreation Center

TINY TOTS TENNIS, Mondays, 4-5 P.M. Ages 3-5, King Greenleaf Recreation Center

TINY TOTS TENNIS, Wednesdays, 5-6 P.M. Ages 3-5, Randall Recreation Center

VOLLEYBALL, Tuesdays, 5:30-7 P.M. Ages 10-14, Safiyyah Aleem-Woods, King Greenleaf Recreation Center

WASHINGTON STAMP COLLECTOR’S CLUB, First and Third Wednesday each month, 7-9 P.M. Buy, trade and sell stamps. Refreshments provided. Christ United Methodist Church

WATERCOLOR PAINTING, Tuesdays and Thursdays, 5:30-7:30 P.M. Ages: 18+, Elin Whitney-Smith, Randall Recreation Center

Wii CLUB, Wednesdays, 4:30 P.M. Children ages 4-12 are invited to play games on the Wii console. Children under 9 years old must be accompanied by a caregiver. SW Library

YOGA IN THE WATER: ALL-LEVELS CLASS, Tuesdays and Thursdays, 9:30-10:30 A.M. and Sundays, 12:30-1:30 P.M. with Pamela Wilson at Waterside Fitness and Swim Club, 901 6th St. SW. \$10 for class/day pass. For more information, call Waterside Fitness and Swim Club, 202-488-3701.

YOUNG LADIES ON THE RISE, Thursdays, 5:30-7 P.M. Ages: 6-14, Michelle Edmonds, King Greenleaf Recreation Center

YOUNG LADIES ON THE RISE, Fridays, 4-6 P.M. Ages 6-12, Karena Houser-Hall, Randall Recreation Center

ZUMBA, Mondays and Thursdays, 6:30-7:30 P.M. Ages 18+, Randall Recreation Center, 202-673-7647

View our on-line calendar at www.swna.org

Submit Calendar events to calendar@thesouthwester.com by the 15th of the month preceding the month it is scheduled.

FLOOD RISK

Continued from p. 1

risks and present this information to the public.

"In analyzing these risks, the Corps not only looks at the condition of the levee system, but also considers how often the area may flood and the population and development at risk behind the levee system," said Johnson.

"The [D.C.] levee system is well maintained and in good condition," said Mark Baker, NPS dam and levee safety officer. "It is designed to hold back major Potomac River floods; however, a stronger storm could cause water to come over the levee system and break the levee, and the consequences could be catastrophic. We also have to consider the three open areas across roads that may need to be closed off by sandbags or aluminum panels, like across 17th Street, prior to a large flood; the volume of tourists in the area; and the complexities associated with evacuation planning."

The District of Columbia, including Southwest D.C., can be flooded three ways: Potomac River freshwater flooding from the upper watershed, Potomac River tidal/storm surge flooding (including during a hurricane) and interior/stormwater flooding. The levee system reduces risks from freshwater and storm surge flooding. The last major riverine flood occurred in 1996, and the last major tidal flood occurred during Hurricane Isabel in 2003.

It is estimated that the levee system reduces the risk for a flood that has between a 0.2 and 0.1 percent chance of occurring in a year. A 0.2 percent chance equates to a 1 in 500 chance of occurring in a year. A 0.1 percent chance equates to a 1 in 1,000 chance of occurring in a year.

"Communicating flood risk is hard," said Johnson. "We use the best modeling available that incorporates historical gauge data to determine these probabilities. It is a moving target. We prefer to communicate using the percent chance a flood has of occurring in a year rather than a certain-year flood event, for instance. A flood deemed a 1 percent annual chance flood or 100-year



Photo: U.S. Army Corps of Engineers

Location of the D.C. levee system and leveed area

flood can happen twice or more in one year, and what was a 100-year flood ten years ago will not be the same as the 100-year flood of the future. We can just look to Ellicott City, Maryland, that received two estimated 1,000-year storms less than two years apart. Across the nation, we are experiencing stronger storms more often."

Though the levee system reduces risk from major flooding along the Potomac River, there still remains the threat of interior flooding, which is caused by heavy localized rainfall that falls directly over the District in a short period of time and overwhelms stormwater systems, like what was experienced in 2006. Even if residents are not likely to be affected by river flooding, it is likely they will be impacted by interior flooding.

"There is little warning time for an interior flood, which is why taking steps now to reduce flood risk is so important; flooding from the river provides a longer warning timeframe," said Donte Lucas, DC HSEMA Deputy Chief of Operations. "Steps anyone

can take to reduce flood damage include purchasing flood insurance even when not required; moving valuables and utilities to higher levels; sealing cracks; being aware of individual flood depths and risk at home and work; signing up for emergency alerts like AlertDC; creating an emergency kit; and knowing evacuation procedures. If you have enough warning for a Potomac River flood and can do so safely, it's also a good

idea to move your car to higher ground if it is parked outside."

The area behind the levee contains more than 40,000 people and \$14 billion in property, including assets and infrastructure of national importance, such as congressional offices, national monuments, the Smithsonian, the National Gallery of Art and the Metro subway system. If the levee were to overtop with water and break during a severe Potomac River flood, flood depths in certain areas of Southwest D.C. could be greater than 15 feet.

"This is a complicated issue, and we're doing the best we can together to continually assess our flood risk in D.C. and determine ways to lower that risk," said Baker. "Federal partners held two workshops this summer to discuss ways to reduce the threat of interior flooding; the Army Corps is looking into increasing the height of the D.C. Levee System; and the Park Service is investigating the use of temporary barriers to be deployed prior to a strong storm to add an extra layer of flood risk management for D.C. We have to be prepared for the worst because there is a lot at stake."

For links to the presentation and handouts from the meeting, go to <https://silver-jackets.nfrmp.us/State-Teams/Washington-DC>. You can also plug in your address and manipulate various flood depths to see when you may flood at your location through an online tool known as the Anacostia and Potomac River Flood Inundation Mapping tool, found at <https://www.weather.gov/lwx//PotomacInundationMaps>. Finally, sign up for AlertDC at <http://alertdc.dc.gov>.

UPS

Continued from p. 2

goal is to begin providing many of the services a growing neighborhood like ours needs. Soon you will be able to select The UPS Store at The Wharf as a drop-off location for your cable and satellite equipment to make it more convenient for returns and replacements. We're also working with Amazon and other retailers to make online shopping even easier as you'll be able to pick-up and return packages at your neighborhood UPS Store. We will also offer a multitude of print services and of course shipping, mailboxes and notary services.

Soon you will be able to come in and order customizable table tents for the next Southwest neighborhood market, invitations and menus for your next party, or order a fresh box of business cards

and pick up office supplies. Many people don't realize that if you have a business or event to promote, we can create brochures, vinyl banners, posters, yard signs, window and floor decals, and other promotional materials.

Most importantly, as a locally owned business, we will have our roots firmly planted in the Southwest community. We'll be staying active in the neighborhood, partnering with our neighborhood ANC, the Southwest BID, other retailers in the community, our local schools, churches and library. Being a local business means supporting local events that keep Southwest thriving, ensuring the community we've all loved keeps its neighborhood charm and being a spot in the neighborhood that locals can visit to see a familiar face. And while there, you can say hi to my dog, Jessie! I look forward to seeing our Southwest neighbors this spring.



FRIENDS OF SOUTHWEST DC

Making our Neighborhood a Better Place

GIVE BACK TO YOUR NEIGHBORHOOD!

Since 1998 Friends of Southwest DC has provided crucial support for local charitable, educational, and community development activities in Southwest DC.

With your help, we can continue our work to make Southwest a better place for all its residents.

A DONOR WILL MATCH ALL DONATIONS UP TO \$5,000 BY DECEMBER 31, 2018

Please join us. Send your tax-deductible contribution to:
Friends of Southwest DC
389 O Street, S. W.
Washington, D.C. 20024

Or donate by credit card using www.FriendsofSWDC.org/donate

We will provide an acknowledgment for your tax records.

For further information, visit our website at www.FriendsofSWDC.org or contact: Coralie Farlee, President, 202-554-4407, FriendsSWDC@yahoo.com

Applications for grants may be submitted at any time; see our website for details.

Friends of Southwest DC is 501(c)(3) organization. We support *The Southwester* through our advertising.



BLINDWHINO.ORG

NEW COLLAB

We're amped to announce our latest residency: Listen Vision is coming to Culture House at Blind Whino! The city's oldest and largest recording studio and internet radio station will be broadcasting live shows – creating content and connections with artists and the community.

STAY TUNED

Scan our social media (@blindwhino) for info on an epic launch, coming soon in the new year.



BLIND *Whino*
CULTUREHOUSE